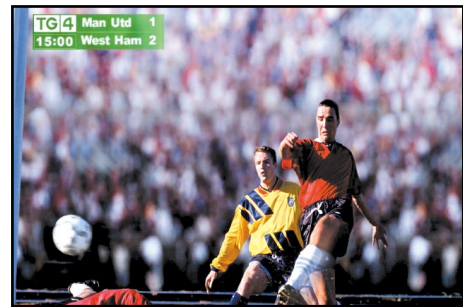


SportsDog

SportsDog displays live sports information – the channel logo, team names and logos, the score and elapsed time and even time of day. Almost any graphic image can be imported making it easy to design logos that can then be displayed with any level of transparency or softness. SportsDog has its own internal keyer so it can be used up or downstream and it also has a key signal output for upstream applications.

Scores can be updated live via remote panel (ideal for OB uses) or using the automation protocol.



FEATURES

- Team logos and channel branding – any size logo
- Integral CG allows addition of text fields - team names, scores etc.
- Count up/down clock
- Elapsed time of play
- Display time of day
- Live updates of scores
- Import images in almost any graphic format
- Uses internal hard disk for image and profile storage
- Includes CD & floppy drives for import/archive
- Selectable upstream or downstream modes
- Remote control via panel, virtual panel and automation systems
- Network capability
- GPI inputs for simple control
- Cut or fade logo in/out
- Serial digital video input and output
- Power fail bypass

Courtyard

Input of excellence, output of quality

SPECIFICATION

Inputs

Power 220 Volts 50Hz
110 Volts 60Hz

Reference Serial Digital

Video

Serial digital

Keyboard PS/2

Mouse PS/2

Monitor VGA

Serial RS 232

Network 10/100 base T

GPI

Outputs

Video

Serial digital
Linear key

Mechanical - rack electronics

Height 2U
Depth 425 mm
Weight 14 kg

Ordering information

| Code | Description |
|----------|----------------------------|
| CY540 | SportsDog Rack Electronics |
| CY540/02 | Serial digital I/O |
| CY540/03 | N/A |
| CY540/04 | N/A |
| CY540/05 | LTC input & GPI |
| CY540/06 | VITC input & GPI |
| CY540/08 | 1U control panel |

Each SportsDog is supplied with a keyboard, mouse, handbook and mating connectors where appropriate.

Courtyard Electronics Limited reserves the right to alter the specifications without prior notice.

